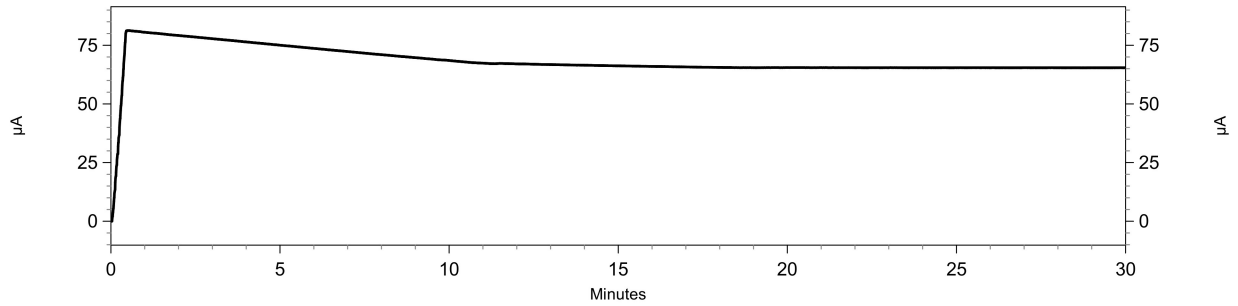
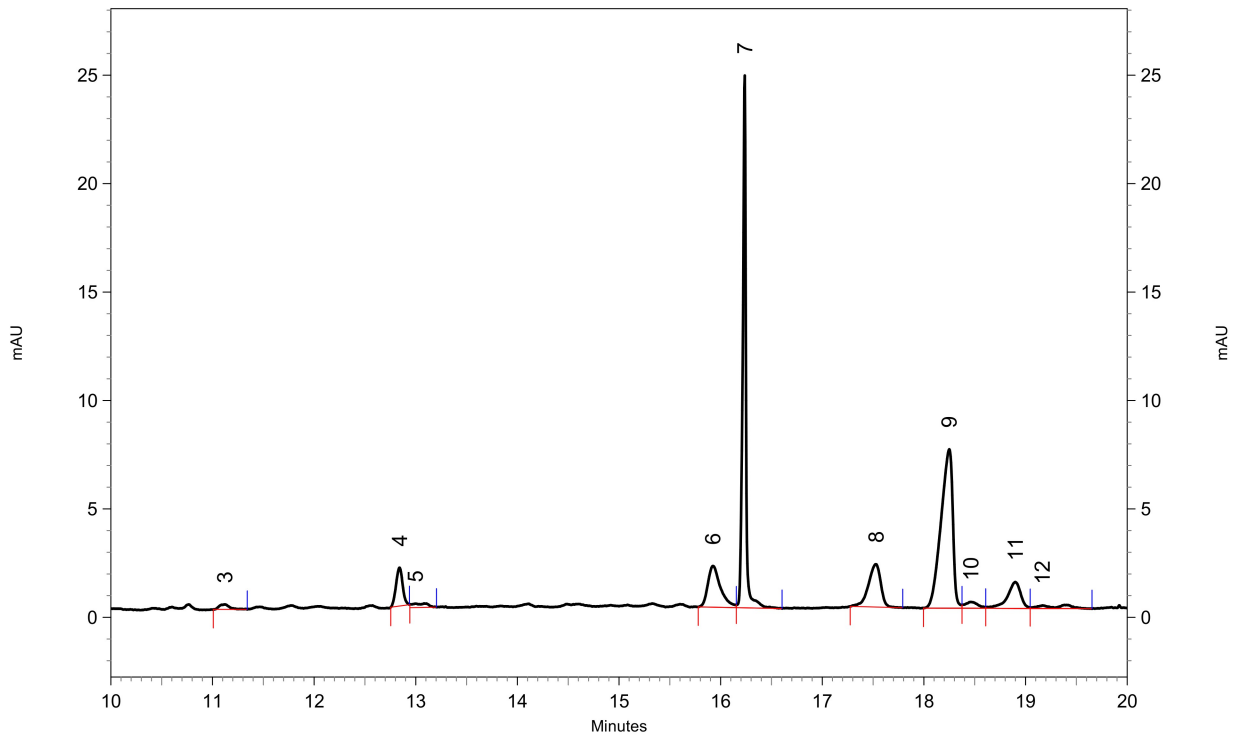


Report - Capillary Electrophoresis

Current:



Electropherogram:



7 Sinalbin

1: 225 nm, 6 nm Results, Peakzuordnung: 4 IS, 6 4OH-GB, 8 GE, 9 GR, 11 GI

Pk #	Migration Time	Corrected Area
1	9.088	1788.26226502
2	9.829	721.23781263
3	11.121	127.08879730
4	12.842	518.42959117
5	12.996	124.71946137
6	15.925	859.13134485
7	16.238	2808.05748011
8	17.529	789.68386023
9	18.250	2715.89041096
10	18.462	115.14330851
11	18.900	486.77248677
12	19.167	119.73913043
13	23.896	163.62685266

Sample ID: 2.31. #11b E=1,3916g Meth2
 Path: C:\32Karat\projects\Brokkoli2020\Data\#159

Report - Capillary Electrophoresis

Totals		11337.78280202
--------	--	----------------

Sample ID: 2.31. #11b E=1,3916g Meth2
Path: C:\32Karat\projects\Brokkoli2020\Data\#159