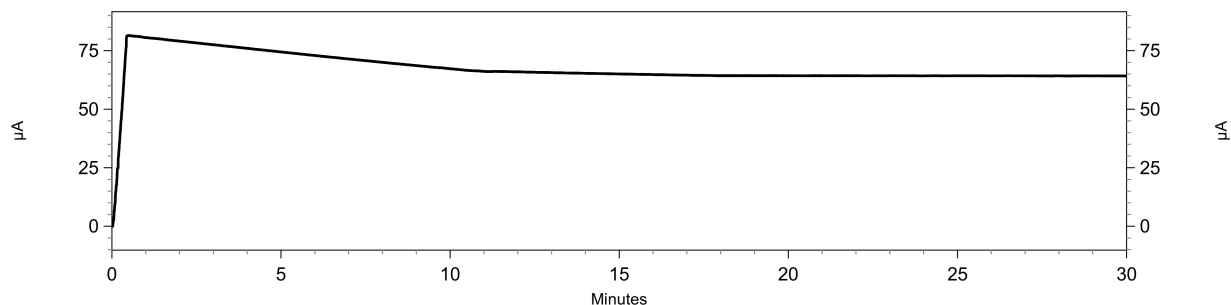
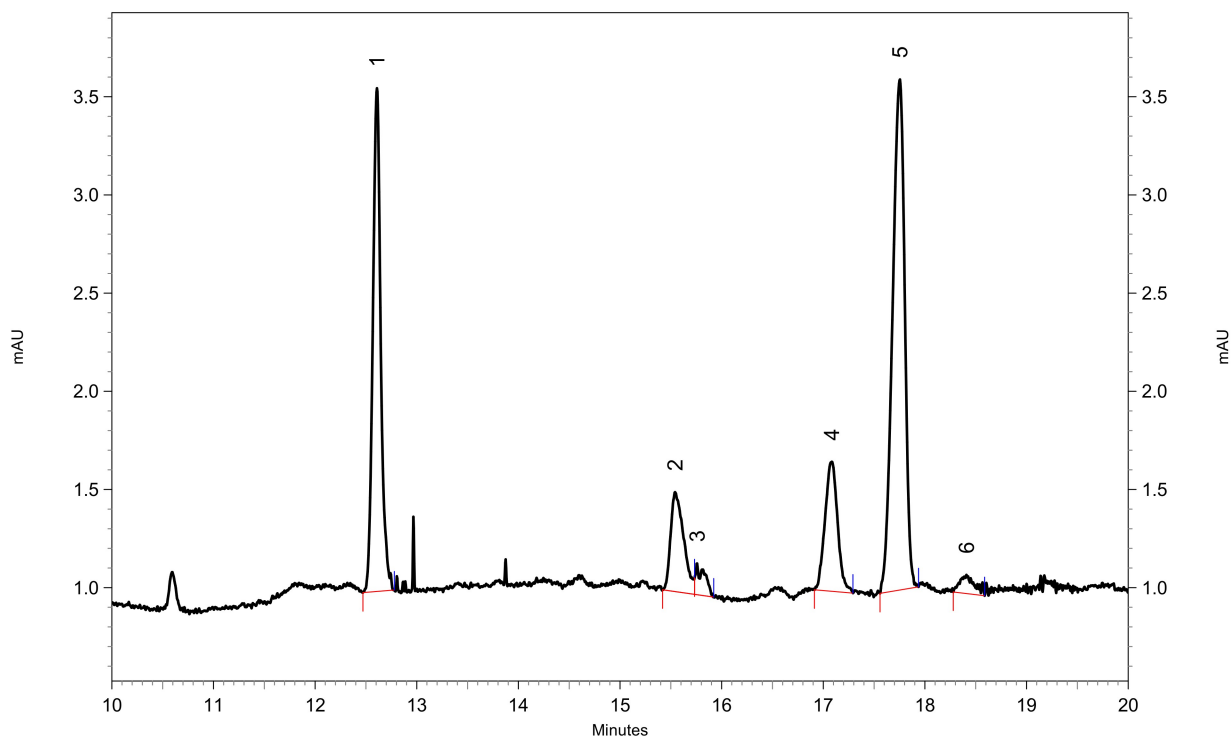


## Report - Capillary Electrophoresis

Current:



Electropherogram:



1: 225 nm, 6 nm Results, Peakzuordnung: 1 IS, 2 4OH-GB, 4 GE, 5 GR, 6 GI

| Pk # | Migration Time | Corrected Area |
|------|----------------|----------------|
| 1    | 12.608         | 917.11830800   |
| 2    | 15.542         | 242.41286863   |
| 3    | 15.758         | 51.87731359    |
| 4    | 17.083         | 277.75609756   |
| 5    | 17.754         | 1015.58319643  |
| 6    | 18.408         | 43.95654142    |
| 7    | 22.825         | 94.48703907    |

|        |  |               |
|--------|--|---------------|
| Totals |  | 2643.19136470 |
|--------|--|---------------|

**Sample ID:** 2.34. #12 E=0,8904g Meth2  
**Path:** C:\32Karat\projects\Brokkoli2020\Data\#162