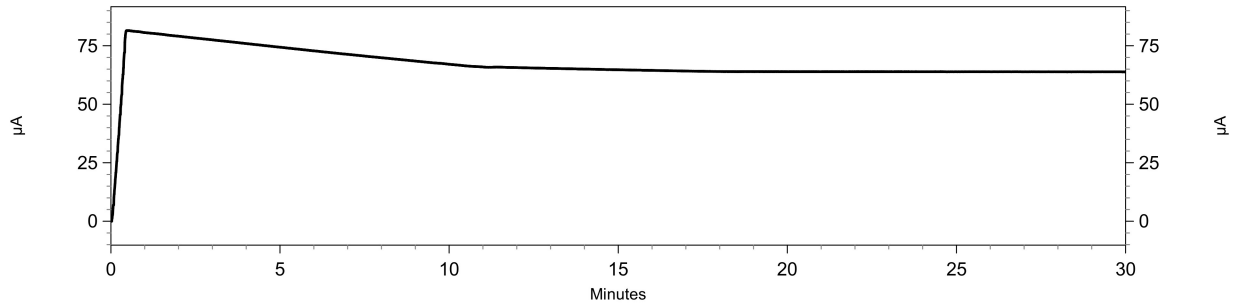
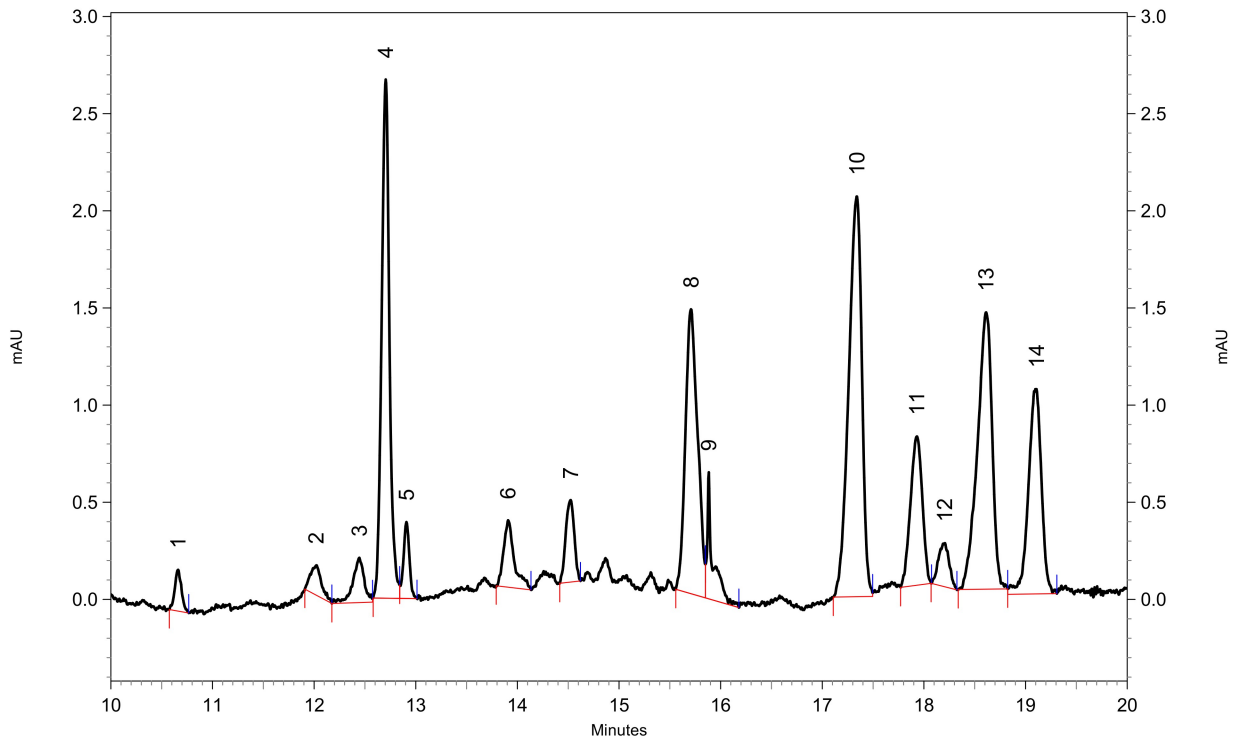


Report - Capillary Electrophoresis

Current:



Electropherogram:



10 Sinigrin, 14 wahrsch. Glucoiberverin

1: 225 nm, 6 nm Results, Peakzuordnung: 4 IS, 8 4OH-GB, 11 GR, 13 GI

Pk #	Migration Time	Corrected Area
1	10.663	76.67057444
2	12.021	80.00000000
3	12.446	120.72313358
4	12.704	935.65103313
5	12.908	103.61523564
6	13.908	150.08987418
7	14.525	141.70969593
8	15.708	650.82228117
9	15.883	130.48268625
10	17.342	892.07111965
11	17.929	288.03160586
12	18.204	75.57793545
13	18.613	640.96709201
14	19.108	412.95246402

Sample ID: 2.35. #13 E=0,7898g Meth2

Path: C:\32Karat\projects\Brokkoli2020\Data\#163

Report - Capillary Electrophoresis

15

23.075

182.91802095

Totals		4882.28275225
--------	--	---------------

Sample ID: 2.35. #13 E=0,7898g Meth2
Path: C:\32Karat\projects\Brokkoli2020\Data\#163