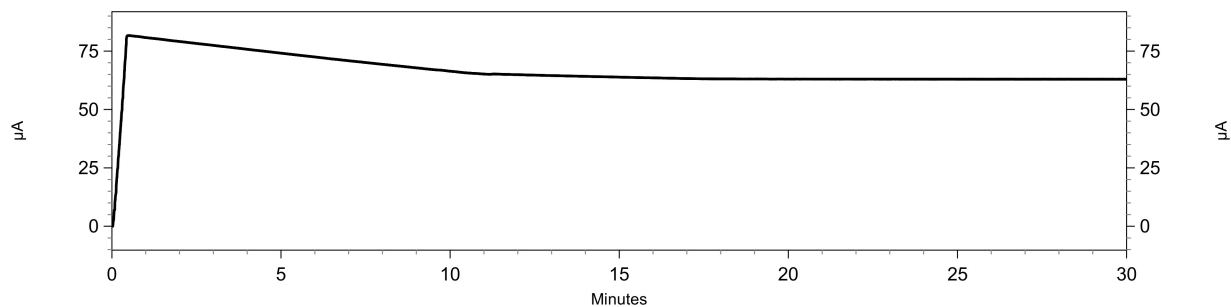
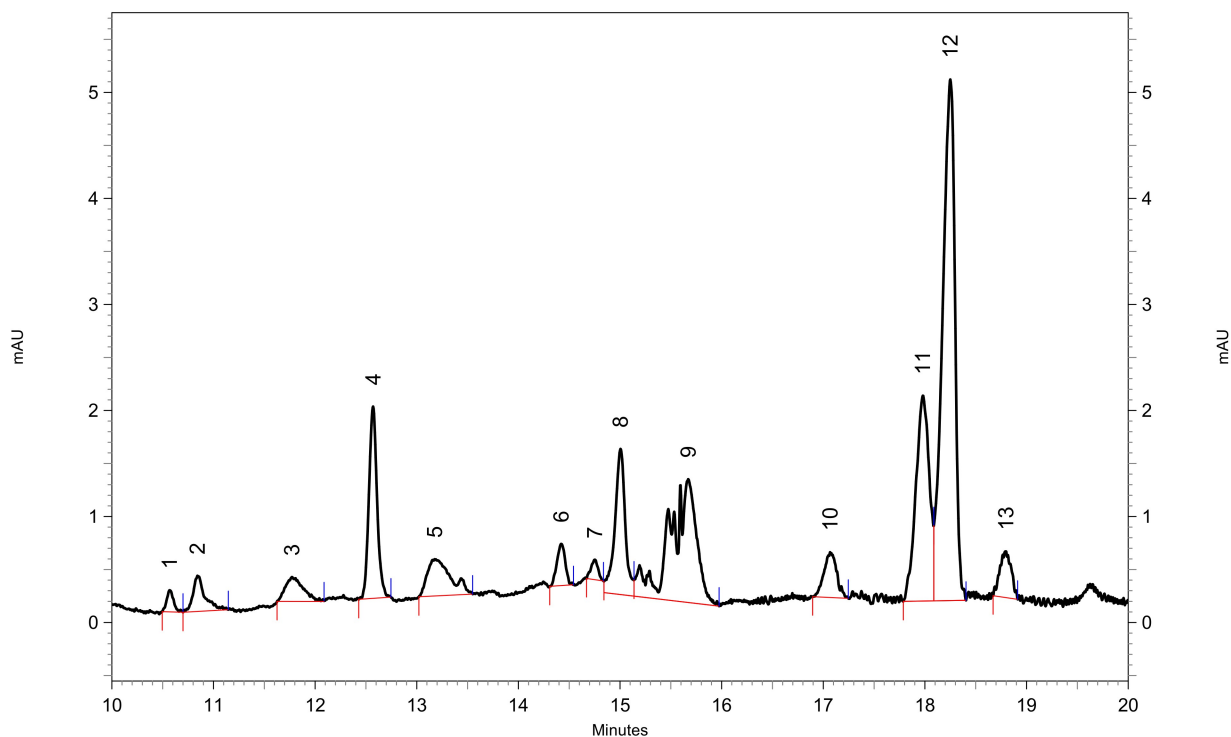


Report - Capillary Electrophoresis

Current:



Electropherogram:



1: 225 nm, 6 nm Results, Peakzuordnung: 4 IS, 11 Glucobrassicinapin 12 Gluconapin

Pk #	Migration Time	Corrected Area
1	10.567	76.26182965
2	10.842	213.29746349
3	11.771	198.86725664
4	12.571	668.01458402
5	13.175	348.70335231
6	14.421	130.02022537
7	14.750	51.41242938
8	15.004	544.29325187
9	15.671	1124.48816804
10	17.067	182.12890625
11	17.979	831.61066049
12	18.250	1914.70319635
13	18.796	151.89536688
14	22.467	172.18100890

Sample ID: 2.37. #14 E=0,9504g Meth2
Path: C:\32Karat\projects\Brokkoli2020\Data\#165

Report - Capillary Electrophoresis

Totals		6607.87769964
--------	--	---------------

Sample ID: 2.37. #14 E=0,9504g Meth2
Path: C:\32Karat\projects\Brokkoli2020\Data\#165