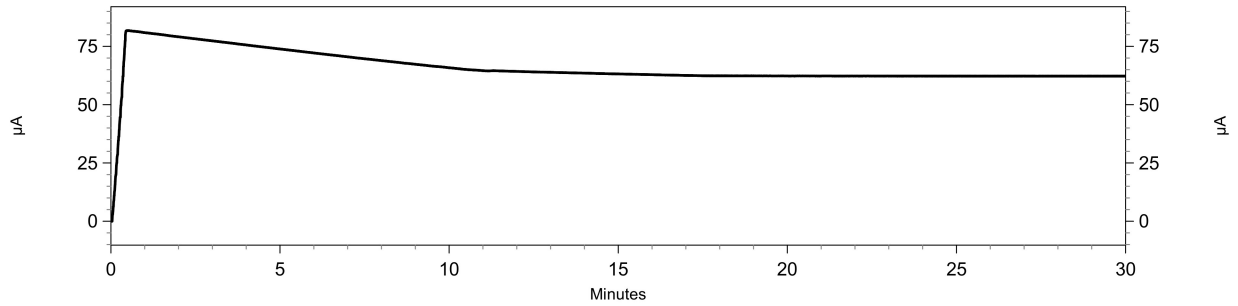
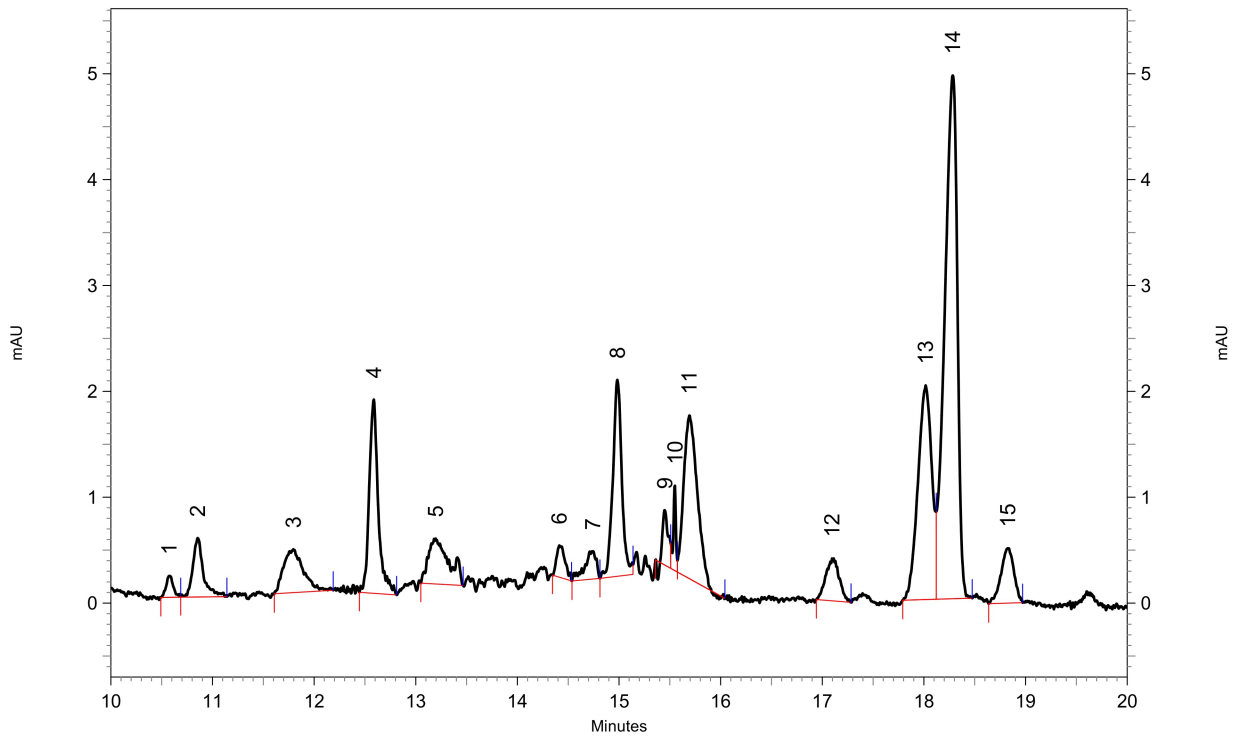


Report - Capillary Electrophoresis

Current:



Electropherogram:



1: 225 nm, 6 nm Results, Peakzuordnung: 4 IS, 13 Glucobrassicinapin 14 Gluconapin

Pk #	Migration Time	Corrected Area
1	10.575	79.35382191
2	10.854	309.55854127
3	11.796	391.66372307
4	12.588	744.58788481
5	13.196	376.00252605
6	14.413	102.34171726
7	14.742	120.29395138
8	14.983	634.31590656
9	15.450	95.30744337
10	15.550	79.79635584
11	15.692	760.27615507
12	17.096	178.55227882
13	18.017	892.83071230
14	18.283	1953.64630811

Sample ID: 2.39. #14b E=0,9858g Meth2
Path: C:\32Karat\projects\Brokkoli2020\Data\#167

Report - Capillary Electrophoresis

15	18.825	204.16113324
16	22.379	173.33829827

Totals		7096.02675733
--------	--	---------------

Sample ID: 2.39. #14b E=0,9858g Meth2
Path: C:\32Karat\projects\Brokkoli2020\Data\#167